



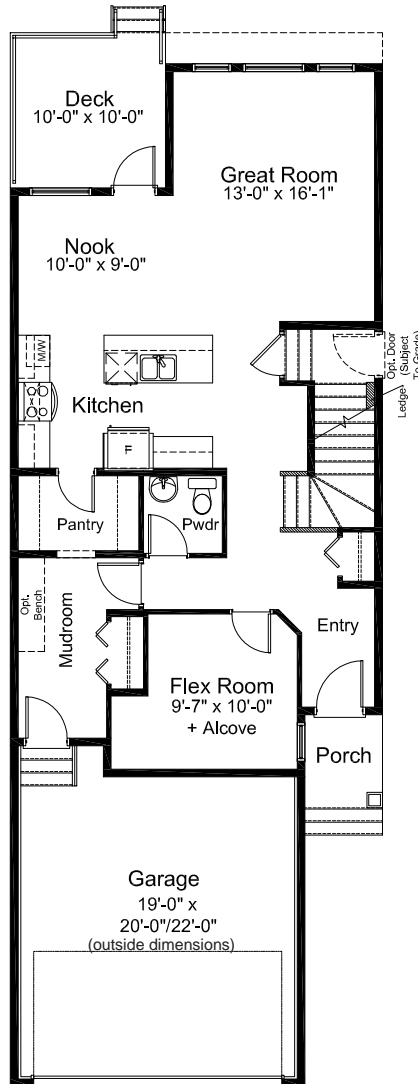
**GRANADA 4 Bed | 2.5 Bath**

- 4 Bedrooms | 2.5 Bathrooms
- Open Concept Living Area
- Walk-Thru Kitchen Pantry
- Luxury Vinyl Plank Flooring
- Stainless Steel Appliance Package
- Quartz Countertops Throughout
- Upper Floor Laundry
- Upper Floor Loft
- Main Floor Flex Room
- Main Floor Mud Room
- Attached Double Car Garage
- Rear Deck

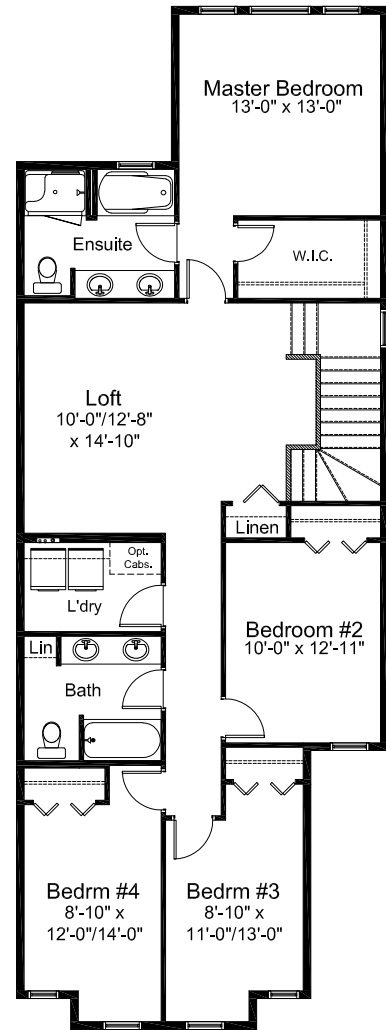




Internal Street Elevation  
Craftsman #1



**MAIN FLOOR 992 sq. ft.**



**UPPER FLOOR 1,380 sq. ft.**

**NOTES**

---



---



---



---

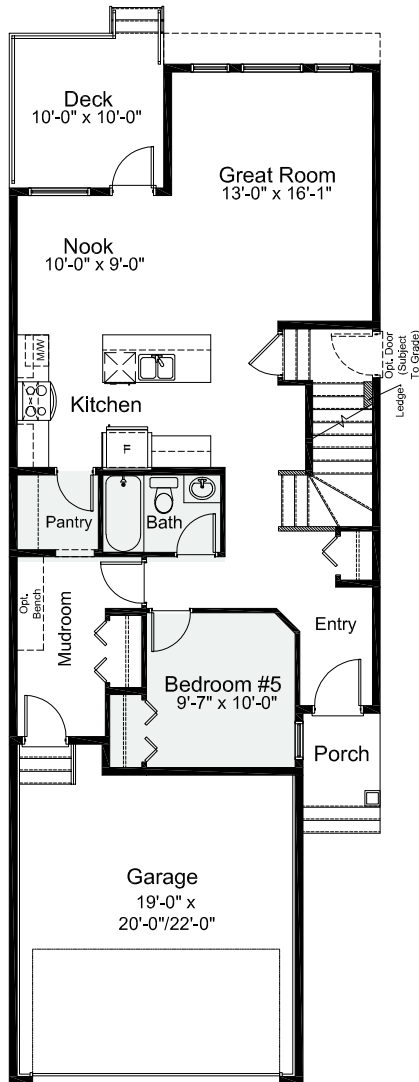


---

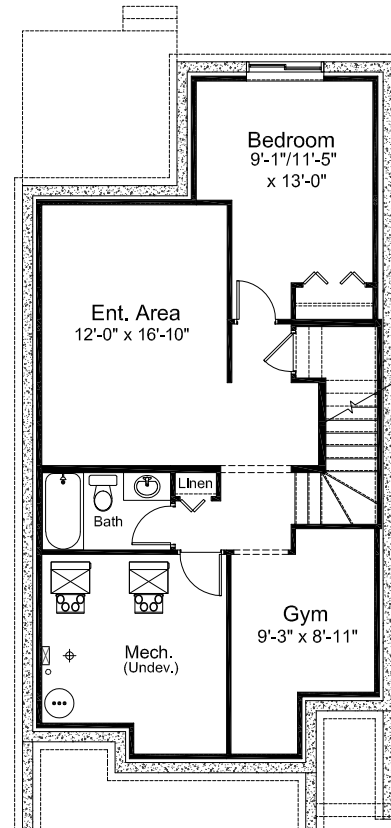
Edited: September 13, 2022

The builder reserves the right to modify or change plans, specifications, features and prices without notice. Materials may be substituted with equivalent or better at the builder's sole discretion. All dimensions and sizes are approximate and are based on architectural measurements. As reverse, mirrored and/or flipped plans occur throughout the building, please see architectural plans if material to your decision to purchase. Renderings, furnishings and equipment shown are an artist's conception and are intended as a general reference only. Please see disclosure statement for specific offering details. E. & O.E.

PRE-PLANNED OPTIONS

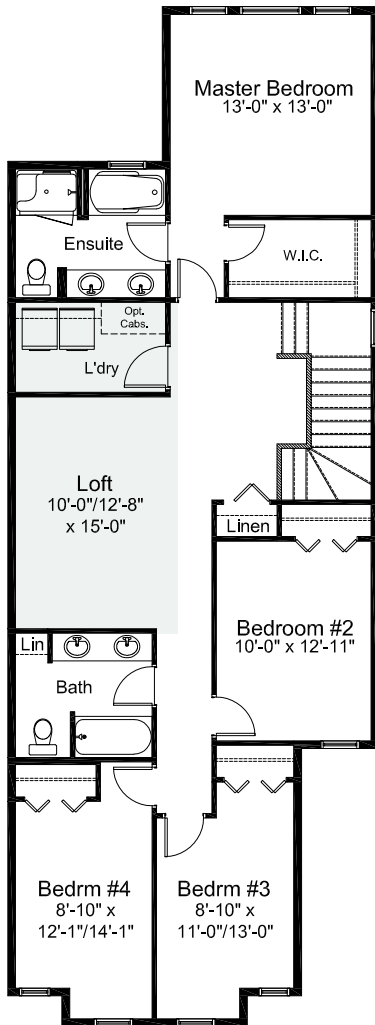


MAIN FLOOR BEDROOM & FULL BATH OPTION

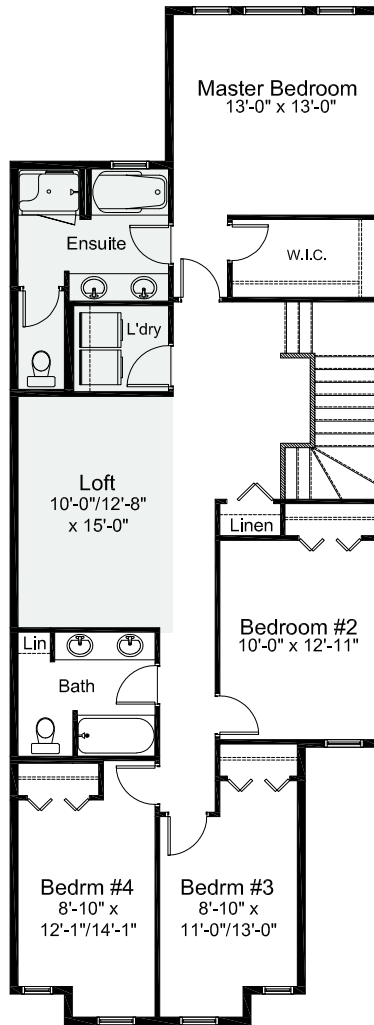


BASEMENT DEVELOPMENT  
OPTION DEVELOPED AREA  
683 sq. ft.

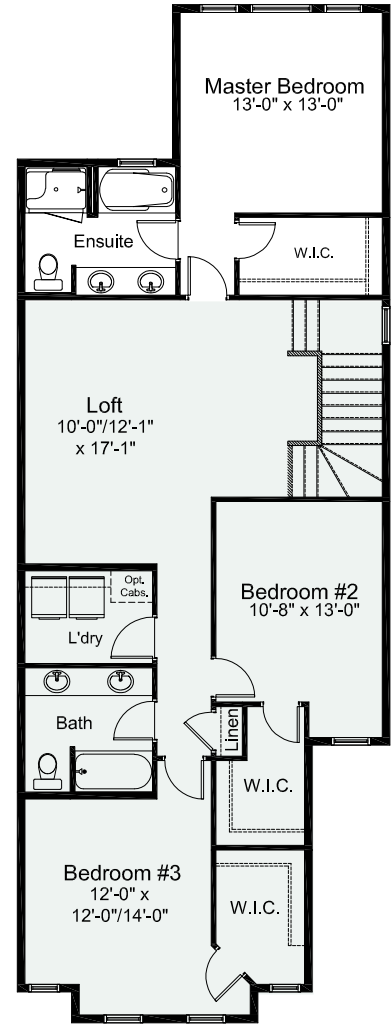
**PRE-PLANNED OPTIONS**



**SWAPPED LAUNDRY  
& LOFT OPTION**



**SWAPPED LAUNDRY & LOFT  
OPTION W/ SEPARATE WATER  
CLOSET IN ENSUITE**



**3 BEDROOM OPTION**