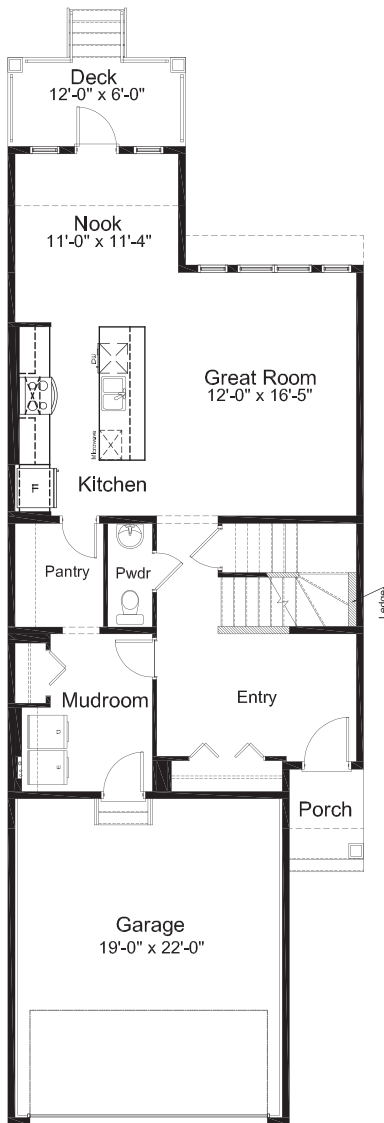


## HENSHAW - CRAFTSMAN -

2,143 SQ. FT.

Lot 15 | Block 1  
Calgary, Alberta



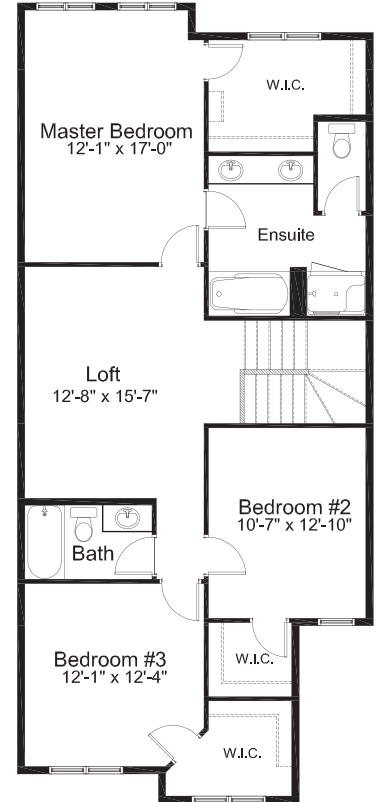
**MAIN FLOOR**  
950 sq. ft.



**INTERNAL STREET ELEVATION**



**PUBLIC STREET ELEVATION**



**UPPER FLOOR**  
1193 sq. ft.

Edited: March 3, 2021

# HENSHAW MODEL FEATURES

- 3 Bedrooms | 2.5 Bath
- Attached Double Car Garage
- Open Concept Main Floor
- Large Main Floor Entry
- Stainless Steel Appliance Package
- Quartz Countertops Throughout
- Large Walk-in Pantry
- Luxury Vinyl Plank Flooring
- Luxury Vinyl Tile Flooring
- Mudroom with Main Floor Laundry
- Upper Floor Loft
- Luxurious 5-piece Master Ensuite
- Private Water Closet in Ensuite
- Walk-in Closets in all Bedrooms
- Covered Deck
- Triple Pane Windows

## NOTES

---

---

---

---

---

---

---

## GET IN TOUCH

**Isaac Wegner**  
403-934-8409  
iwegner@madisonavegroup.com

**Dianne Miller**  
403-701-3022  
dmiller@madisonavegroup.com

**Michael Hare**  
587-223-0255  
mhare@madisonavegroup.com

**BELVEDERE RISE SALES OFFICE**  
EAST HILLS SHOPPING CENTRE, STONEY TRAIL & 17TH AVE SE  
CALGARY, AB

**NEW SHOW HOME COMING SOON!**  
78 BELVEDERE GREEN SE  
CALGARY, ALBERTA

**MADISON AVENUE GROUP**  
SUITE 1500, 150 9TH AVENUE SW CALGARY, AB. T2P 3H9  
INFO@MADISONAVEGROUP.COM | 403-217-9970 | MADISONAVEGROUP.COM

