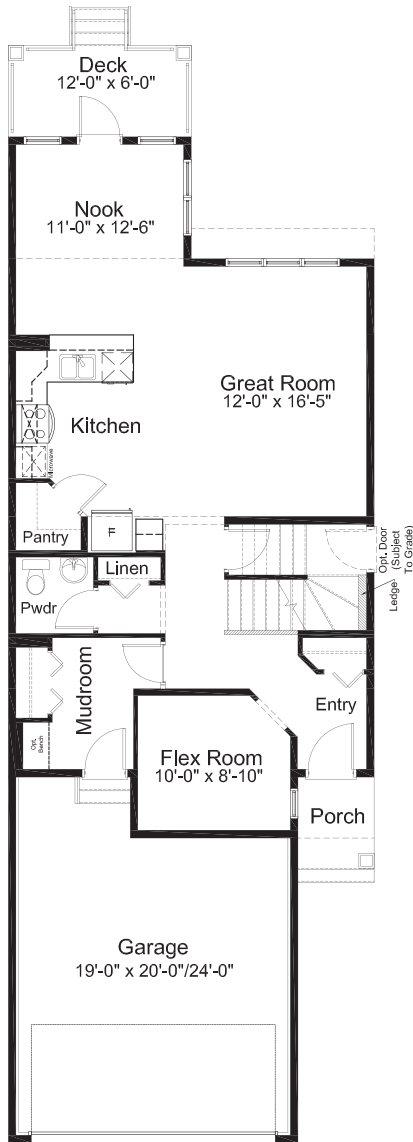


HENSHAW -CRAFTSMAN-

2,117 SQ. FT.

Lot 25 | Block 1
Calgary, Alberta



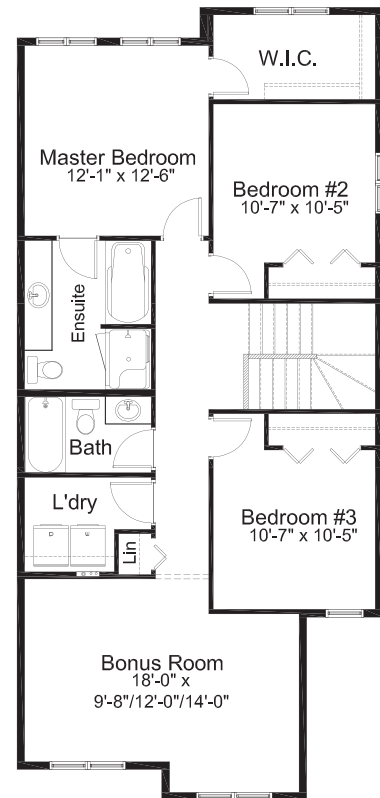
MAIN FLOOR
956 sq. ft.



INTERNAL STREET ELEVATION



PUBLIC STREET ELEVATION



UPPER FLOOR
1145 sq. ft.

Edited: March 4, 2021

HENSHAW MODEL FEATURES

- 3 Bedrooms | 2.5 Bath
- Attached Double Car Garage
- Open Concept Main Floor
- Large Main Floor Entry
- Stainless Steel Appliance Package
- Quartz Countertops Throughout
- Walk-in Pantry
- Luxury Vinyl Plank Flooring
- Luxury Vinyl Tile Flooring
- Mudroom
- Private Powder Room
- Upper Floor Bonus Room
- Upper Floor Laundry Room
- Spacious Master Ensuite
- Covered Deck
- Triple Pane Windows

NOTES

GET IN TOUCH

Isaac Wegner
403-934-8409
iwegner@madisonavegroup.com

Dianne Miller
403-701-3022
dmiller@madisonavegroup.com

Michael Hare
587-223-0255
mhare@madisonavegroup.com

BELVEDERE RISE SALES OFFICE
EAST HILLS SHOPPING CENTRE, STONEY TRAIL & 17TH AVE SE
CALGARY, AB

NEW SHOW HOME COMING SOON!
78 BELVEDERE GREEN SE
CALGARY, ALBERTA

MADISON AVENUE GROUP
SUITE 1500, 150 9TH AVENUE SW CALGARY, AB. T2P 3H9
INFO@MADISONAVEGROUP.COM | 403-217-9970 | MADISONAVEGROUP.COM

