



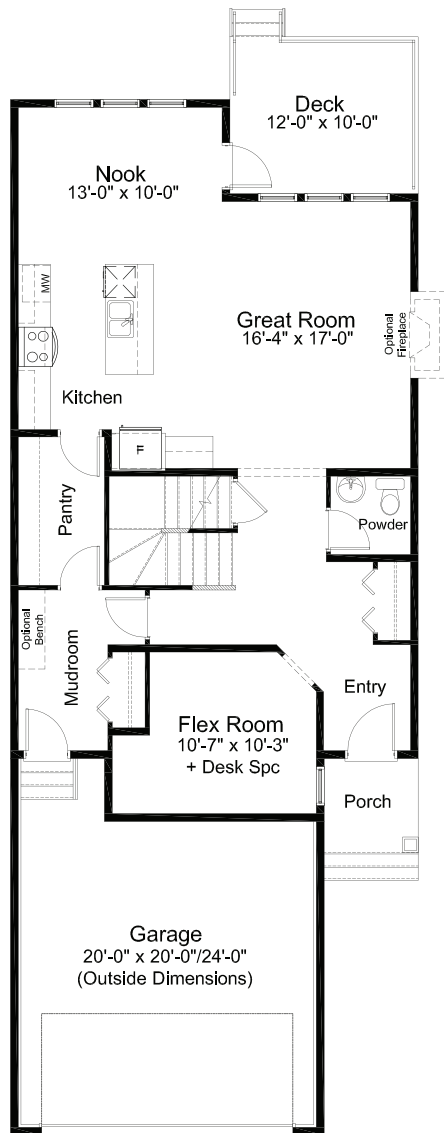
**EDGEWATER**    4 Bed | 2.5 Bath

- Open Concept Living Area
- Walk-thru Kitchen Pantry
- Luxury Vinyl Plank Flooring
- Luxury Vinyl Tile
- Stainless Steel Appliance Package
- Quartz Countertops Throughout
- Upper Floor Laundry
- Upper Floor Loft
- Main Floor Flex Room
- Main Floor Mud Room
- Attached Double Car Garage
- Triple Pane Windows

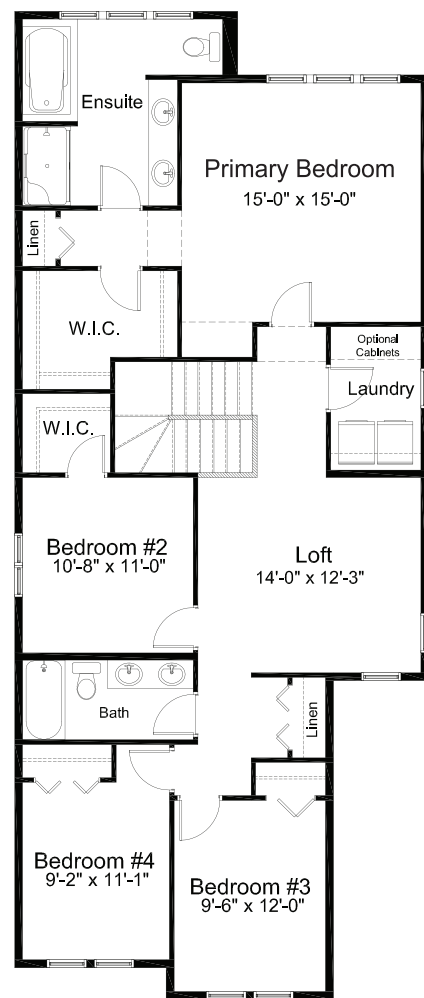




**Prairie #1 Elevation**



**MAIN FLOOR 1,076 sq. ft.**



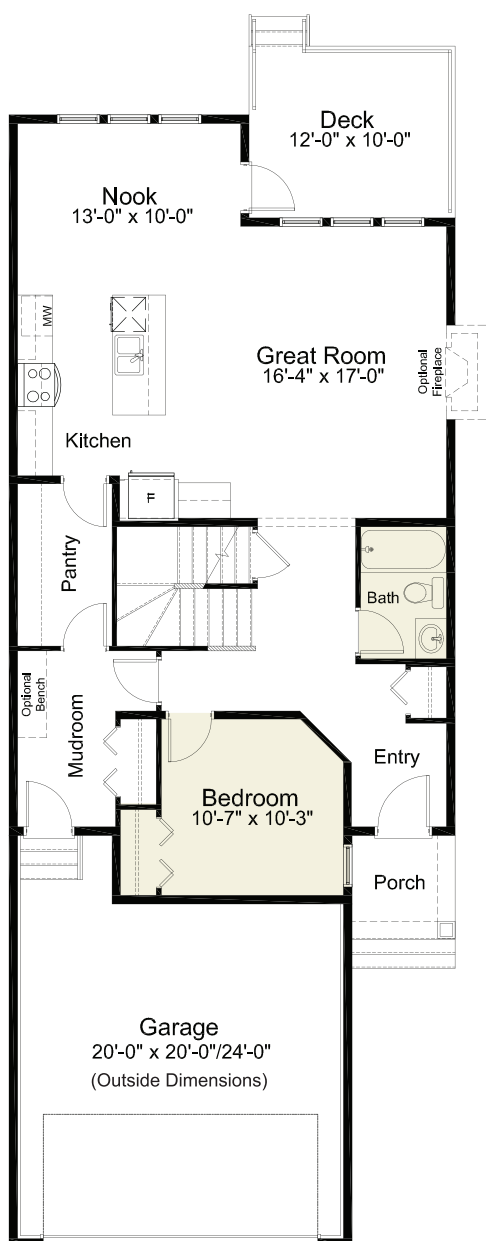
**UPPER FLOOR 1,425 sq. ft.**

## NOTES

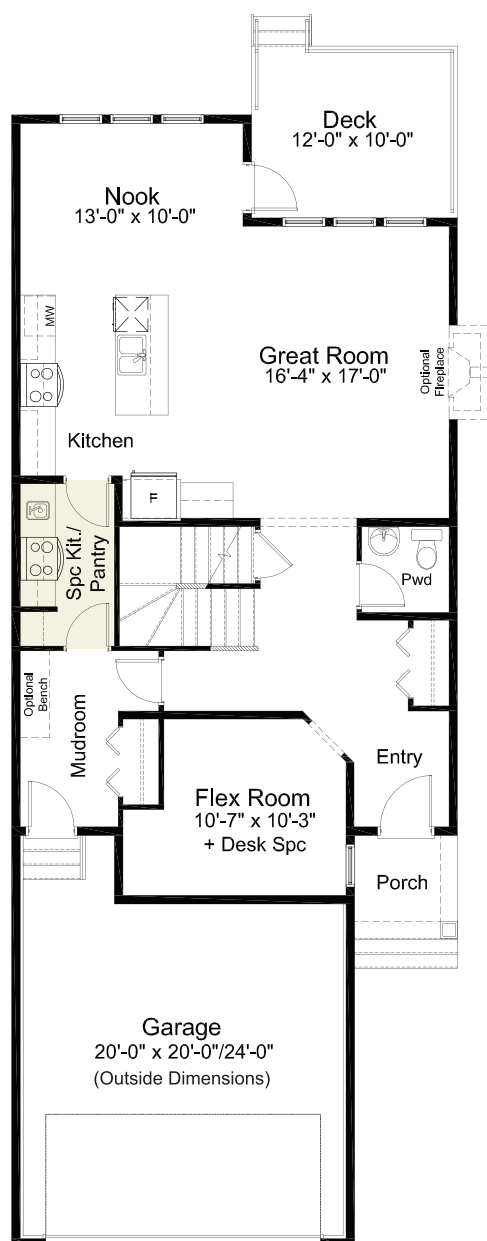
Edited: June 21, 2023

The builder reserves the right to modify or change plans, specifications, features and prices without notice. Materials may be substituted with equivalent or better at the builder's sole discretion. All dimensions and sizes are approximate and are based on architectural measurements. As reverse, mirrored and/or flipped plans occur throughout the building, please see architectural plans if material to your decision to purchase. Renderings, furnishings and equipment shown are an artist's conception and are intended as a general reference only. Please see disclosure statement for specific offering details. E. & O.E.

## PRE-PLANNED OPTIONS

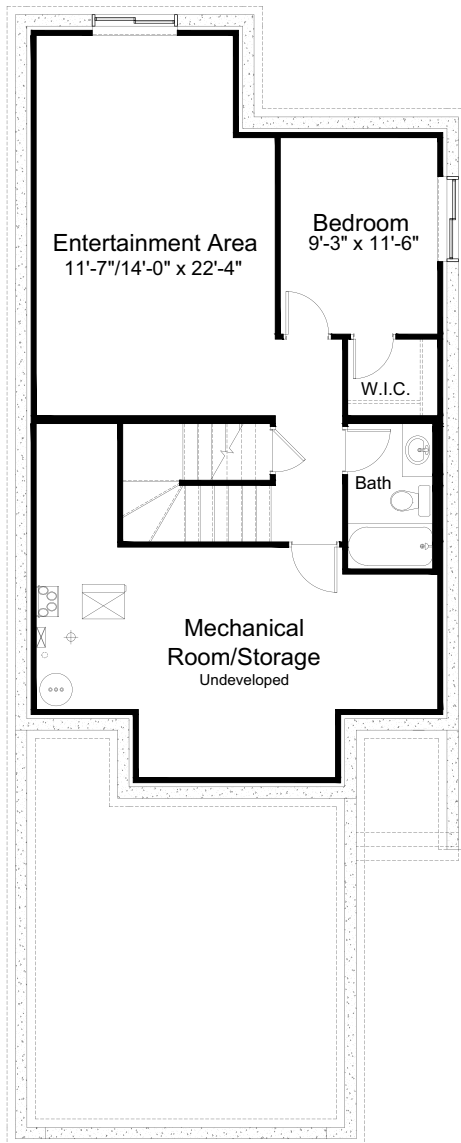


**Main Floor Bedroom  
& Full Bath Option**

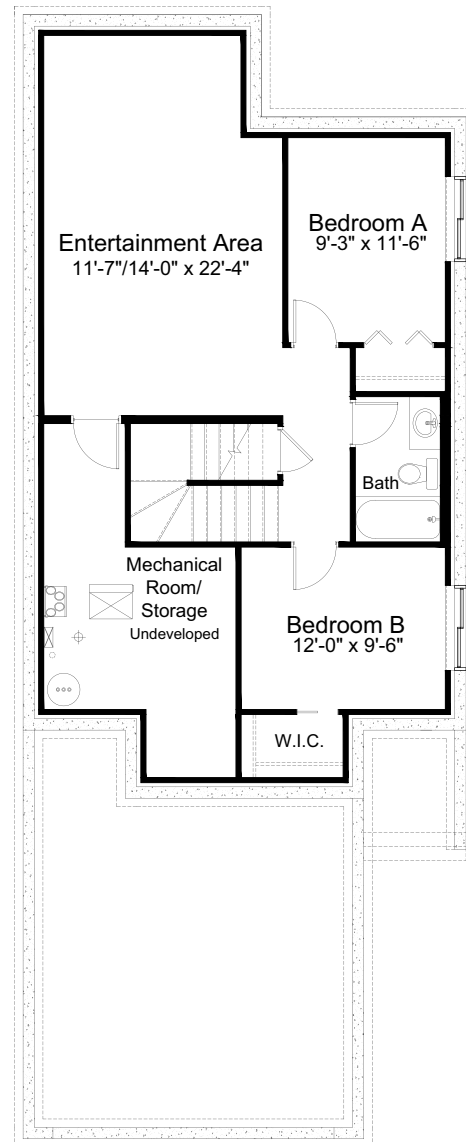


**Spice Kitchen Option**

## PRE-PLANNED OPTIONS



**1 Bedroom Basement Development**  
589 sq. ft.



**2 Bedroom Basement Development**  
737 sq. ft.