

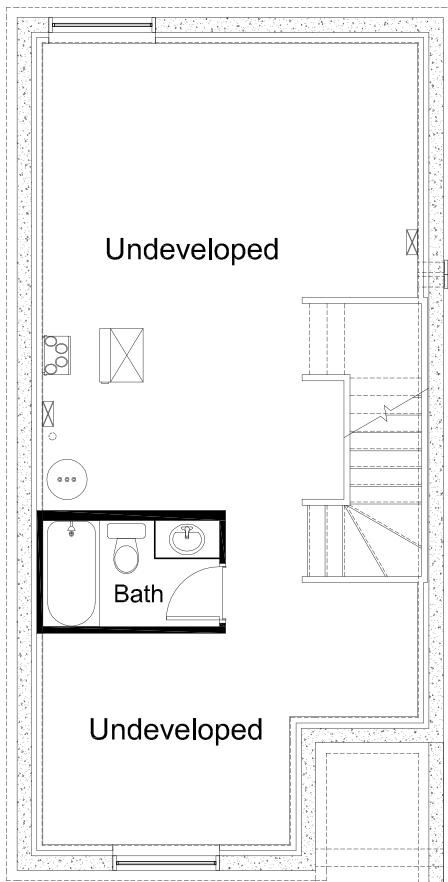
EDISON -CRAFTSMAN-

1,528 SQ. FT.

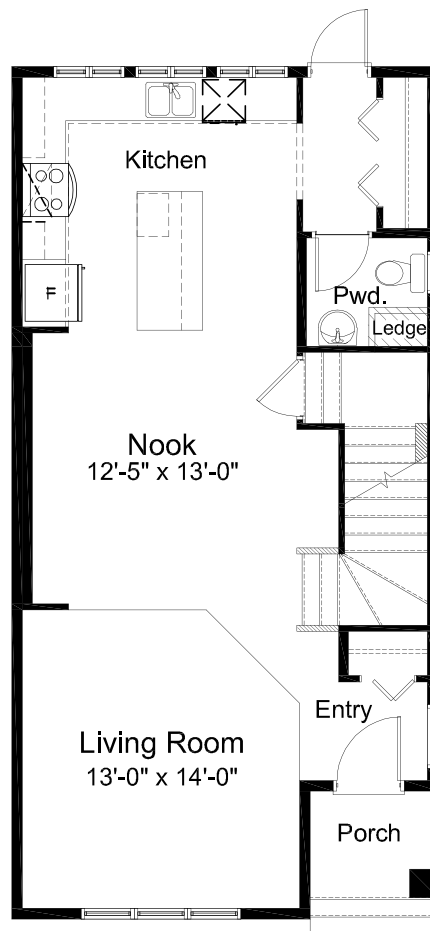
Lot 40 | Block 2
#125 - 65 Belvedere Point SE
Calgary, Alberta



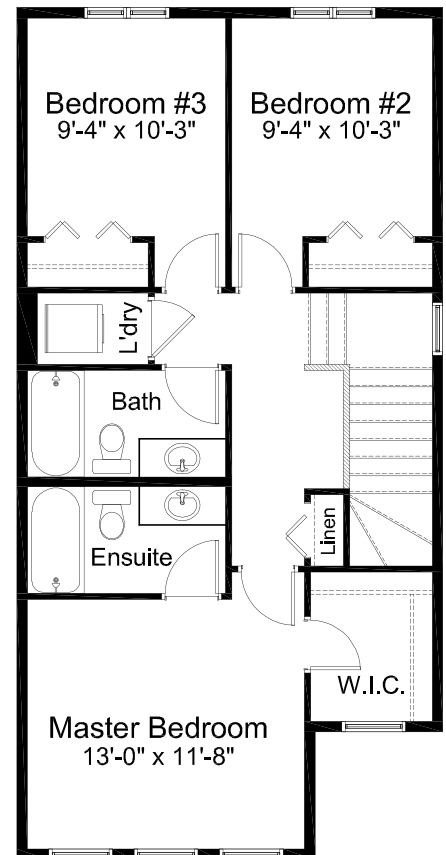
FRONT ELEVATION



BASEMENT
51 sq. ft.



MAIN FLOOR
764 sq. ft.



UPPER FLOOR
764 sq. ft.

Edited: July 5, 2021

Madison Avenue Group retains the rights to alter plans, features and specifications without notice. Specifications and features as described on brochure may vary slightly compared to the original house.

EDISON MODEL FEATURES

- 3 Bedrooms | 3.5 Bath
- Open Concept Main Floor
- Stainless Steel Appliance Package
- Quartz Countertops Throughout
- Luxury Vinyl Plank Flooring
- Luxury Vinyl Tile Flooring
- Developed Basement Bathroom
- Upper Floor Laundry
- 3-piece Master Ensuite
- Spacious Walk-in Master Closet
- Triple Pane Windows

NOTES

GET IN TOUCH

Isaac Wegner
403-934-8409
iwegner@madisonavegroup.com

Dianne Miller
403-701-3022
dmiller@madisonavegroup.com

Michael Hare
587-223-0255
mhare@madisonavegroup.com

BELVEDERE SHOW HOME
78 BELVEDERE GREEN SE
CALGARY, ALBERTA

MADISON AVENUE GROUP
SUITE 1500, 150 9TH AVENUE SW CALGARY, AB. T2P 3H9
INFO@MADISONAVEGROUP.COM | 403-217-9970 | MADISONAVEGROUP.COM

