

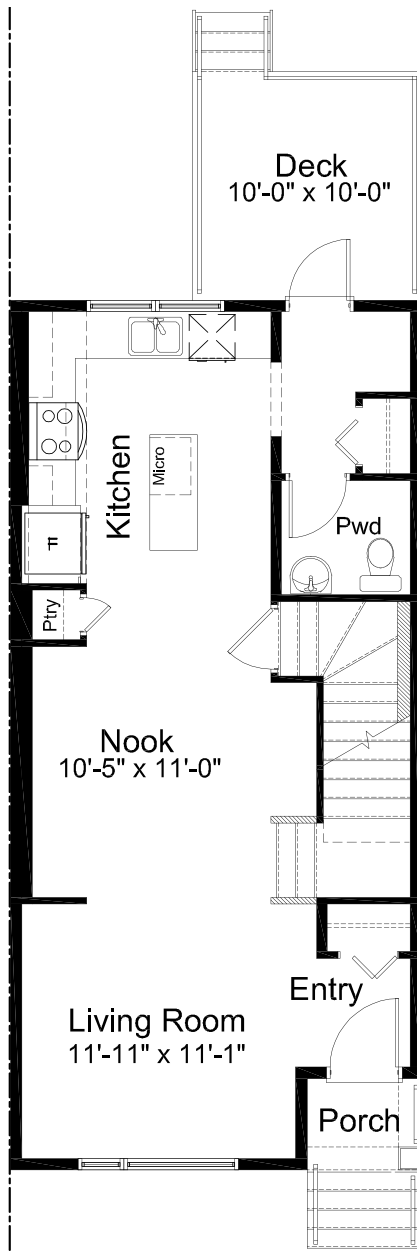
## SANFORD -STREET TOWN-

1,324 SQ. FT.

Lot 8 | Block 1  
34 Belvedere Avenue SE  
Calgary, Alberta



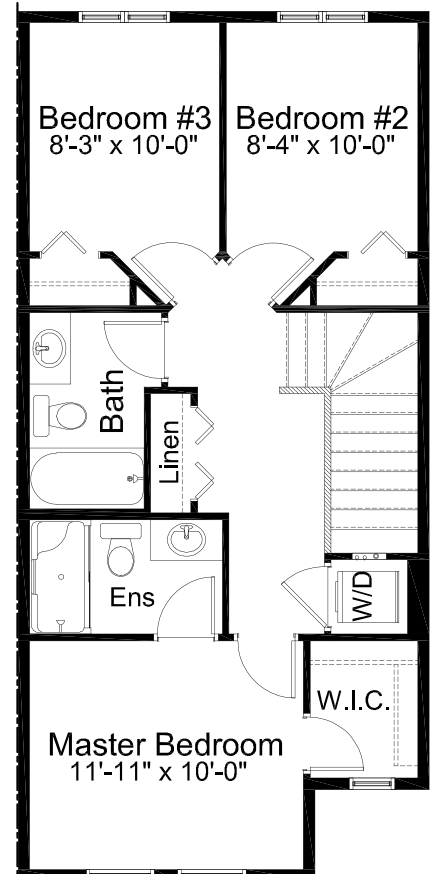
**BELVEDERE**  
- RISE -



**MAIN FLOOR**  
662 sq. ft.



**FRONT ELEVATION**



**UPPER FLOOR**  
662 sq. ft.

Edited: September 20, 2021

Madison Avenue Group retains the rights to alter plans, features and specifications without notice. Specifications and features as described on brochure may vary slightly compared to the original house.

# SANDFORD MODEL FEATURES

- 3 Bedrooms | 2.5 Bath
- Open Concept Main Floor
- Stainless Steel Appliance Package
- Quartz Countertops Throughout
- Luxury Vinyl Plank Flooring
- Luxury Vinyl Tile Flooring
- Upper Floor Laundry
- 3-piece Master Ensuite
- Spacious Walk-in Master Closet
- Detached Double Car Garage
- Triple Pane Windows
- Backyard Deck
- Fully Fenced Yard with Landscaping
- NO CONDO FEES!

## NOTES

---

---

---

---

---

---

## GET IN TOUCH

**Isaac Wegner**  
403-934-8409  
[iwegner@madisonavegroup.com](mailto:iwegner@madisonavegroup.com)

**Dianne Miller**  
403-701-3022  
[dmiller@madisonavegroup.com](mailto:dmiller@madisonavegroup.com)

**Michael Hare**  
587-223-0255  
[mhare@madisonavegroup.com](mailto:mhare@madisonavegroup.com)

**BELVEDERE SHOW HOME**  
78 BELVEDERE GREEN SE  
CALGARY, ALBERTA

**MADISON AVENUE GROUP**  
SUITE 1500, 150 9TH AVENUE SW CALGARY, AB. T2P 3H9  
[INFO@MADISONAVEGROUP.COM](mailto:INFO@MADISONAVEGROUP.COM) | 403-217-9970 | [MADISONAVEGROUP.COM](http://MADISONAVEGROUP.COM)

