

# alliston

AT HOME



## CLAREMONT

### features

- Open Concept Living Area
- Main Floor Flex Area
- Stainless Steel Appliance Package
- Quartz Countertops Throughout
- Luxury Vinyl Plank Flooring
- Luxury Vinyl Tile
- Upper Floor Laundry
- Upper Floor Loft
- Triple Pane Windows

1,768 sq. ft.

3 Bed

2.5 Bath



587-620-3645

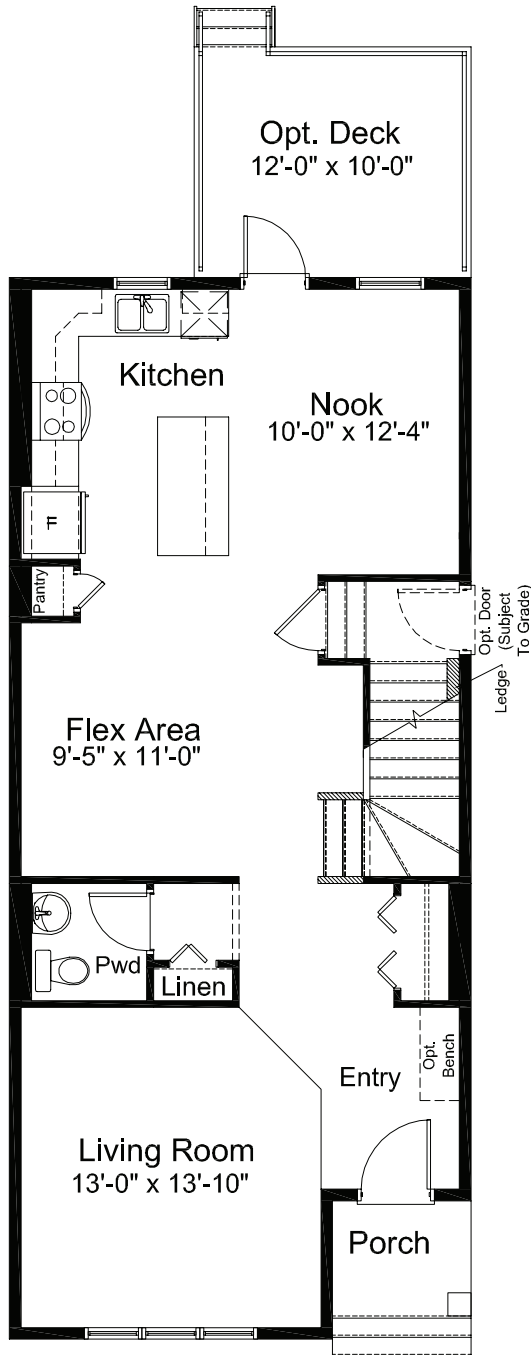
[belvedere@allistongroup.ca](mailto:belvedere@allistongroup.ca)



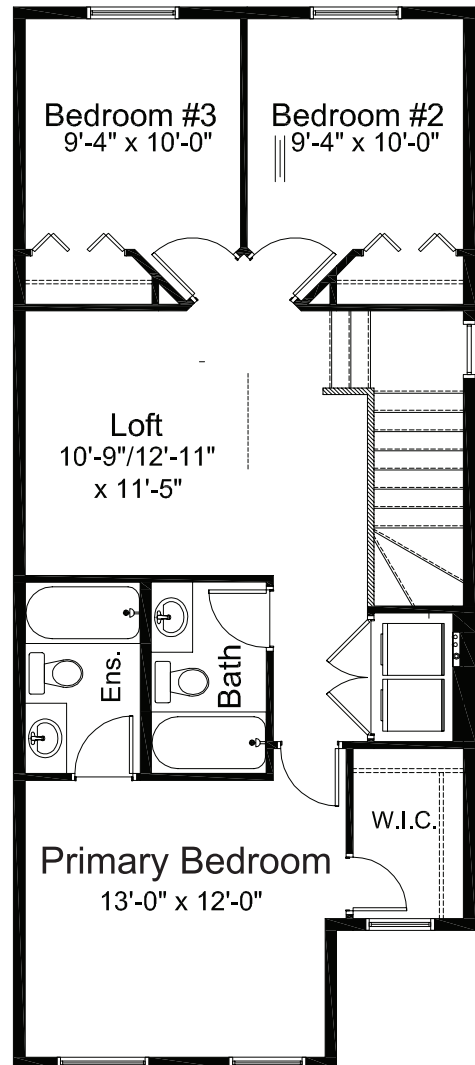
standard plan



MODERN ELEVATION



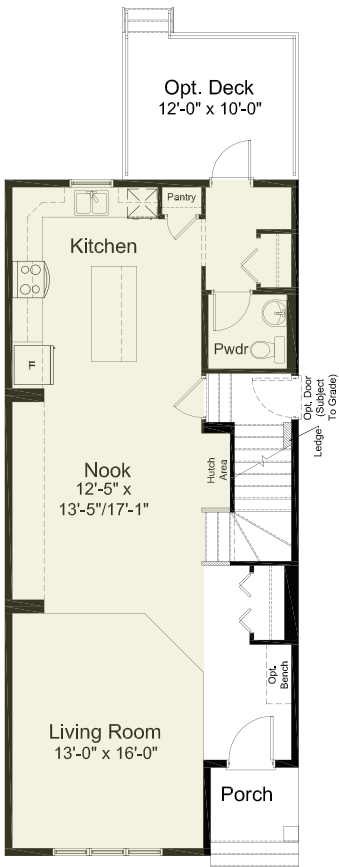
MAIN FLOOR 884 sq. ft.



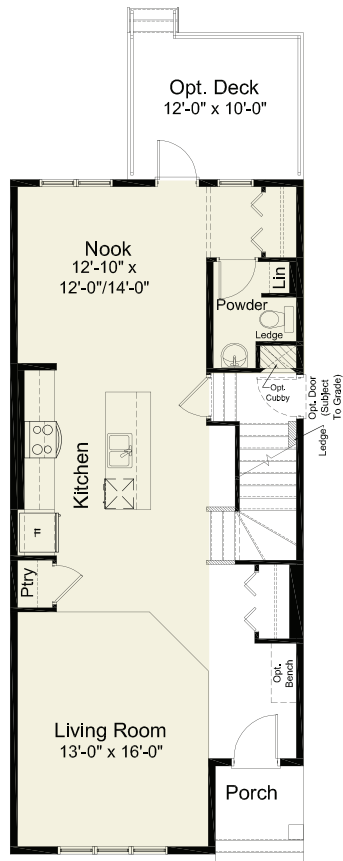
UPPER FLOOR 884 sq. ft.



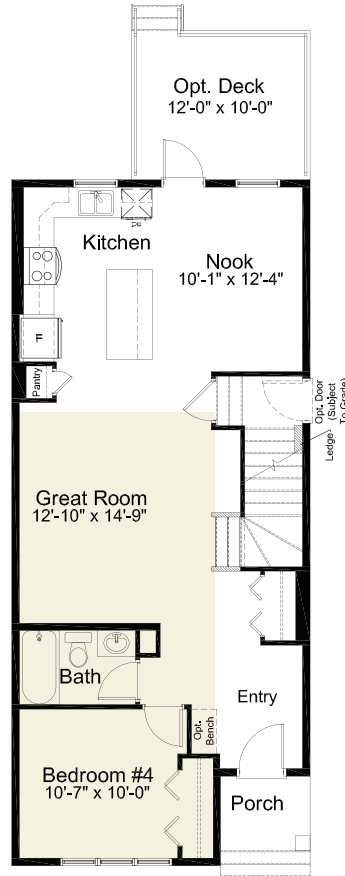
pre-planned options



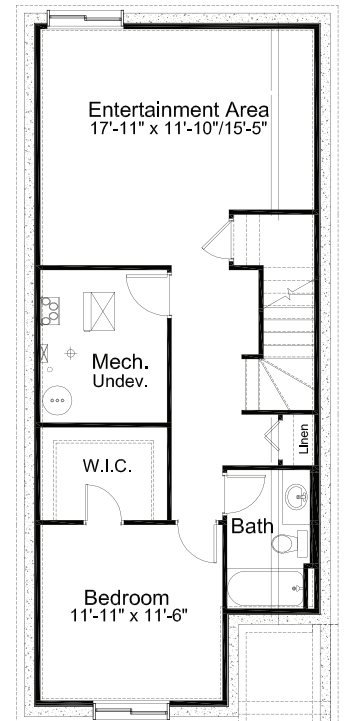
Kitchen/Nook & Back Entrance Layout Option #1



Kitchen/Nook & Back Entrance Layout Option #2



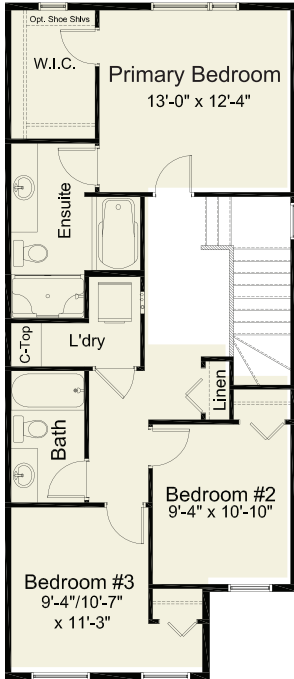
4th Bedroom Layout Option



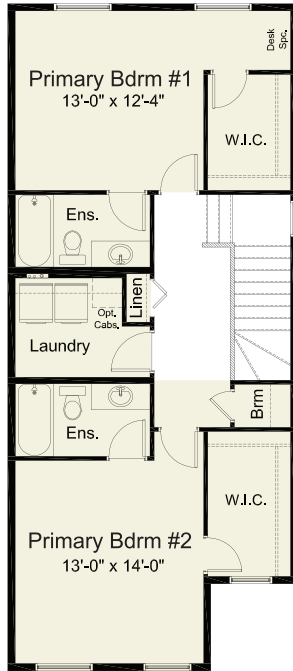
Basement Development Option 654 sq. ft. of developed area



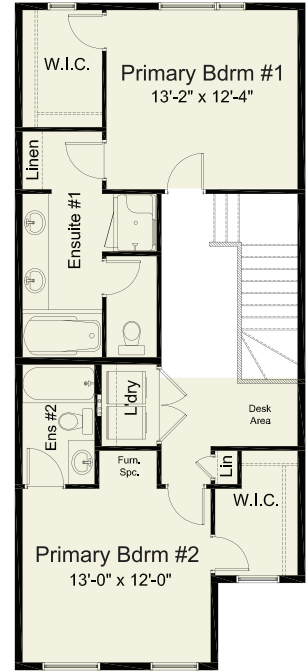
pre-planned options



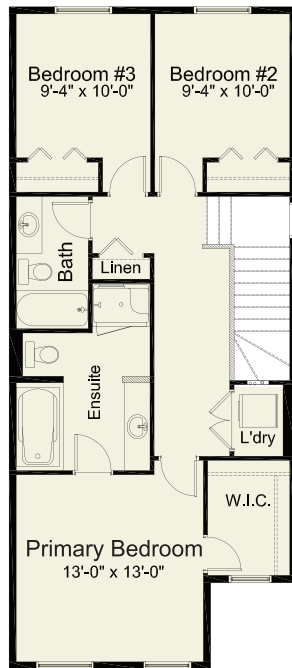
Ensuite/WIC  
Laundry Option



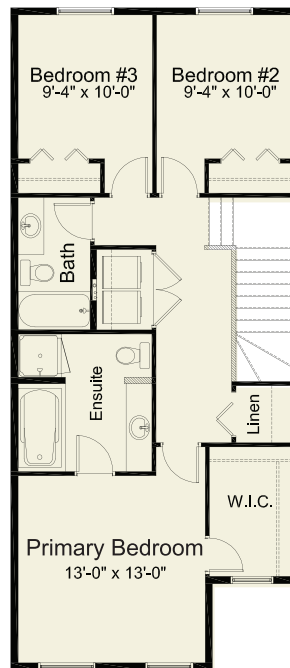
Double Primary  
Bedroom Option #1



Double Primary  
Bedroom Option #2  
w/ Expanded Grand  
Ensuite Option  
(36" x 36" shower)



Expanded Grand  
Ensuite Option  
(48"x36" shower)



Expanded Grand  
Ensuite Option  
(36"x36" shower)