



Cicely

alliston
AT HOME

3 Bed | 3 Bath | 2,052 sq. ft.

78 belvedere green se
calgary, alberta

587-620-3645
belvedere@allistongroup.ca

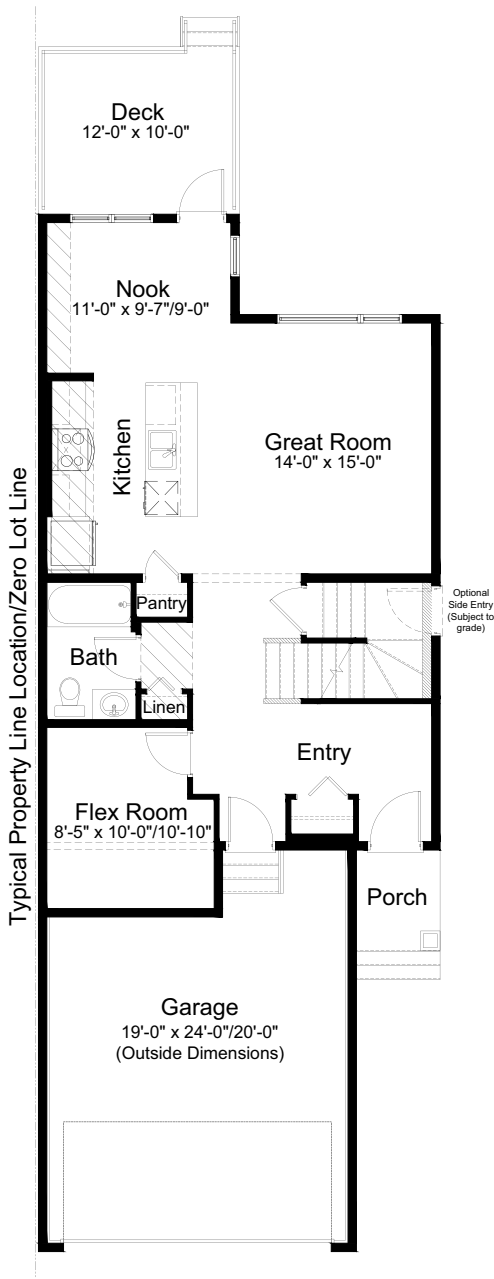

BELVEDERE

- Open Concept Living Area
- Luxury Vinyl Plank Flooring
- Luxury Vinyl Tile
- Stainless Steel Appliance Package
- Quartz Countertops Throughout
- Upper Floor Laundry
- Upper Floor Loft
- 5-Piece Ensuite
- Main Floor Flex Room
- Main Floor Full Bath
- Attached Double Car Garage
- Triple Pane Windows

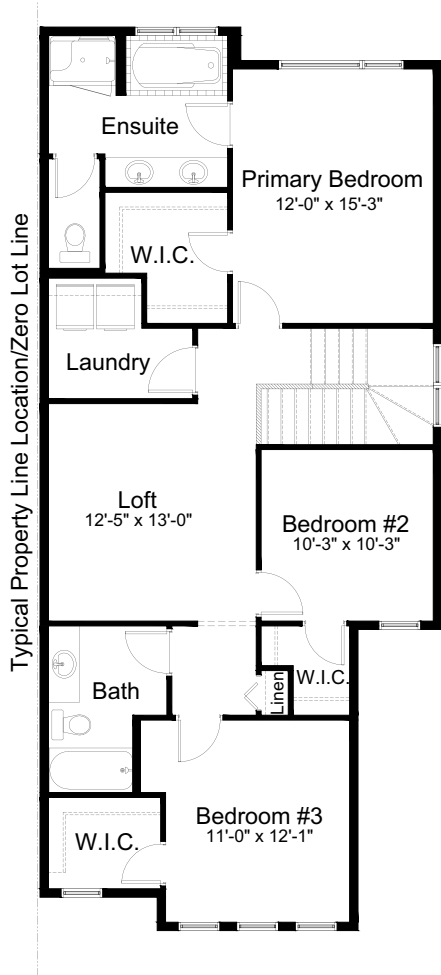
Edited: October 11, 2023
The builder reserves the right to modify or change plans, specifications, features and prices without notice. Materials may be substituted with equivalent or better at the builder's sole discretion. All dimensions and sizes are approximate and are based on architectural measurements. As reverse, mirrored and/or flipped plans occur throughout the building, please see architectural plans if material to your decision to purchase. Renderings, furnishings and equipment shown are an artist's conception and are intended as a general reference only. Please see disclosure statement for specific offering details. E. & O.E.



CRAFTSMAN #2 ELEVATION

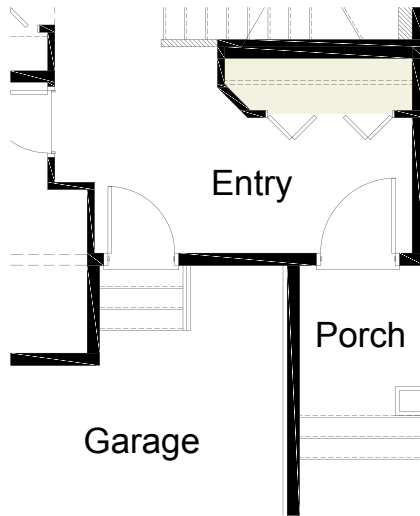


MAIN FLOOR 884 sq. ft.

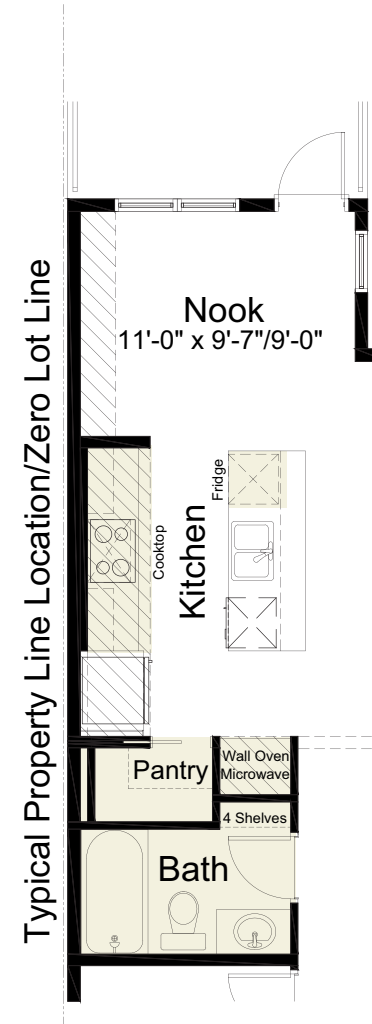


UPPER FLOOR 1,168 sq. ft.

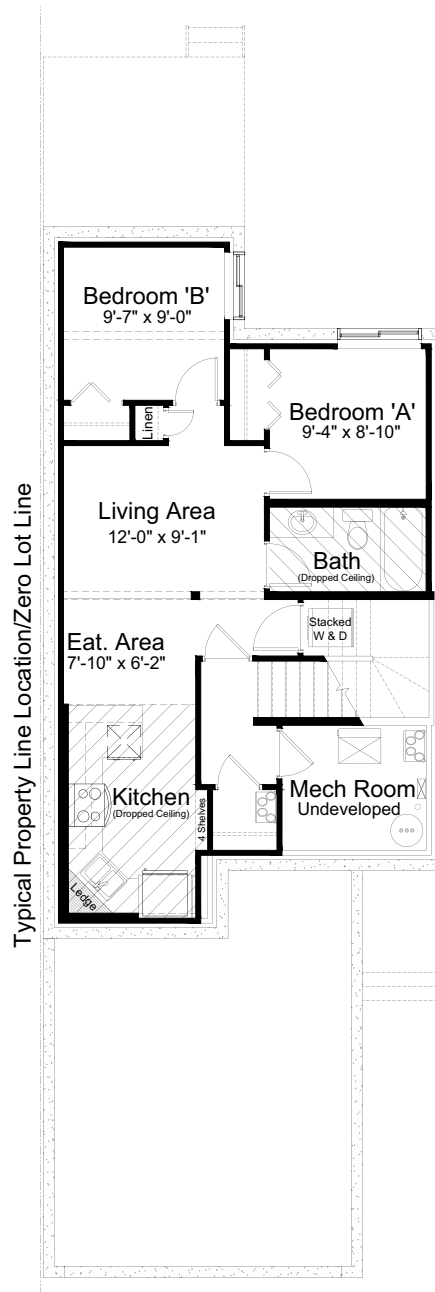
pre-planned options



Revised Entry Option



Gourmet Kitchen Option



Basement Suite Option
658 sq. ft. of developed area

Edited: October 11, 2023

The builder reserves the right to modify or change plans, specifications, features and prices without notice. Materials may be substituted with equivalent or better at the builder's sole discretion. All dimensions and sizes are approximate and are based on architectural measurements. As reverse, mirrored and/or flipped plans occur throughout the building, please see architectural plans if material to your decision to purchase. Renderings, furnishings and equipment shown are an artist's conception and are intended as a general reference only. Please see disclosure statement for specific offering details. E. & O.E.