

alliston

AT HOME



CICELY

features

- Open Concept Living Area
- Luxury Vinyl Plank Flooring
- Luxury Vinyl Tile
- Stainless Steel Appliance Package
- Quartz Countertops Throughout
- Upper Floor Laundry
- Upper Floor Loft
- 5-Piece Ensuite
- Main Floor Flex Room
- Main Floor Full Bath
- Attached Double Car Garage
- Triple Pane Windows

2,052 sq. ft.

3 Bed

3 Bath



587-620-3645

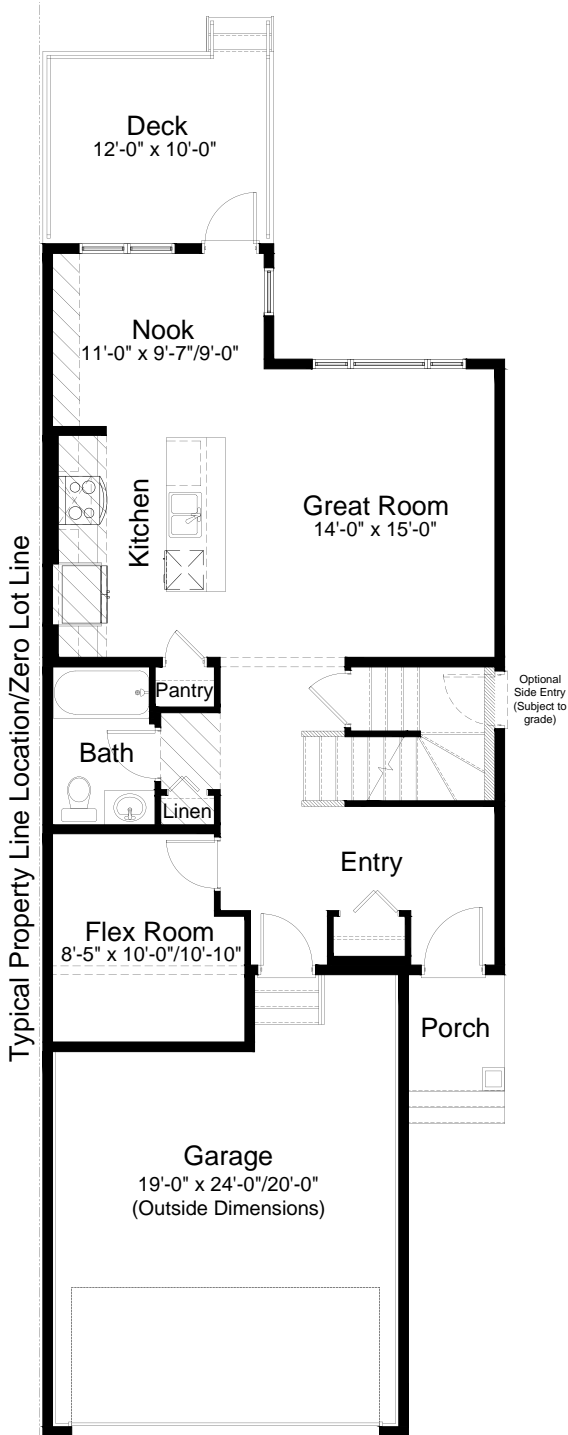
belvedere@allistongroup.ca



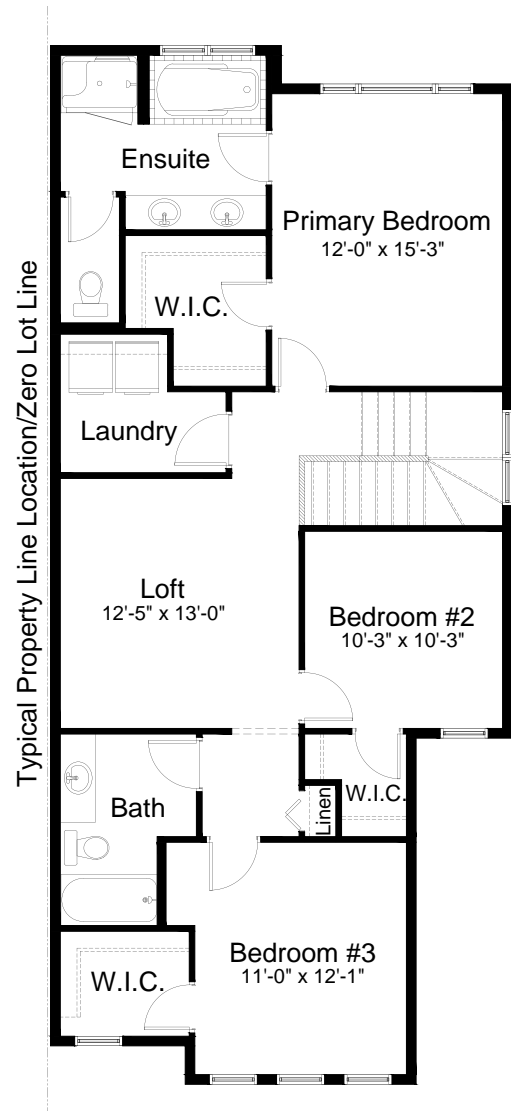
standard plan



CRAFTSMAN #2 ELEVATION



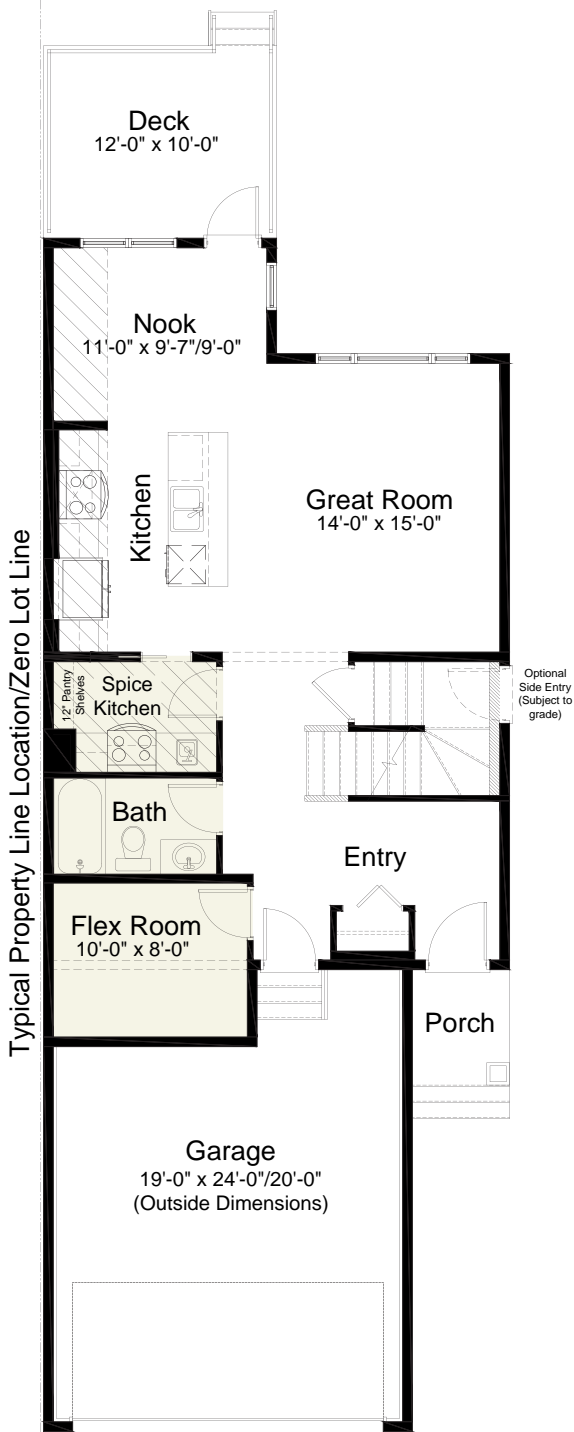
MAIN FLOOR 884 sq. ft.



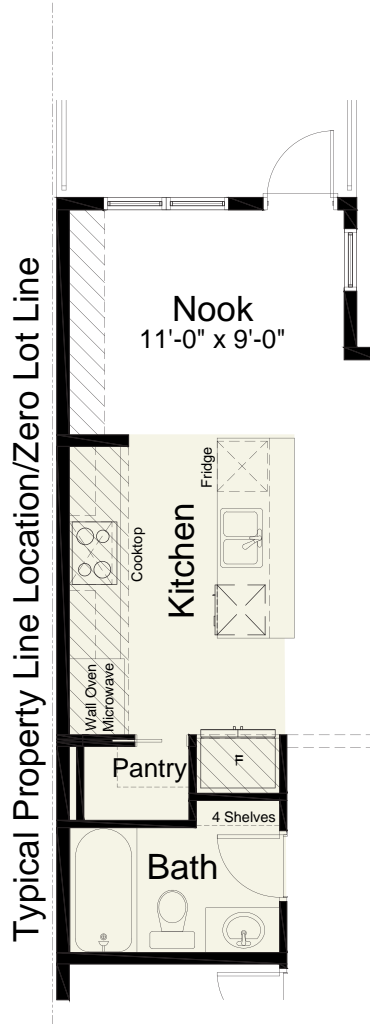
UPPER FLOOR 1,168 sq. ft.



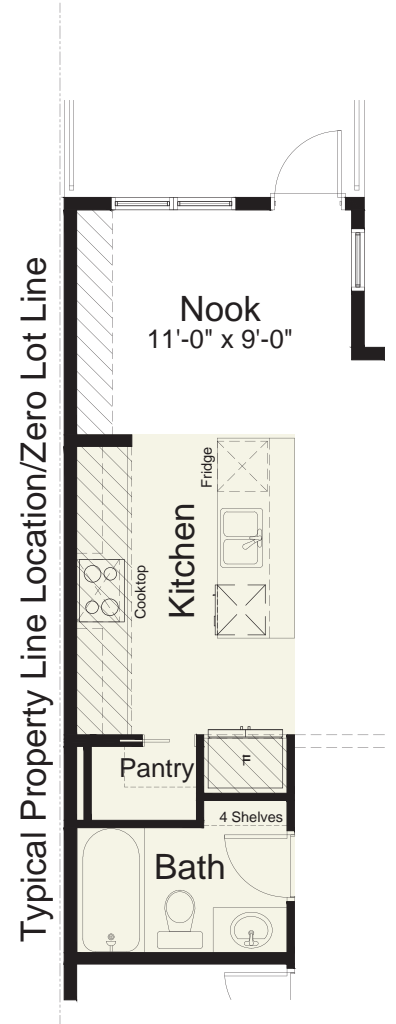
pre-planned options



Spice Kitchen Option



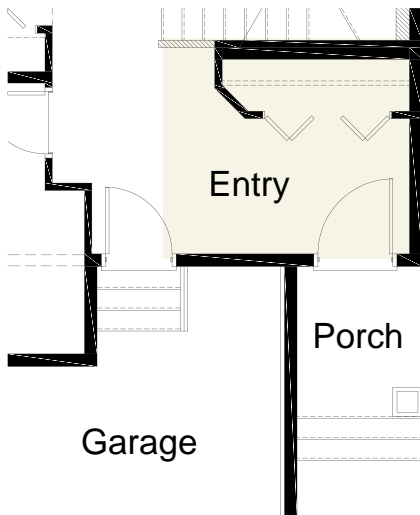
Gourmet Kitchen Option



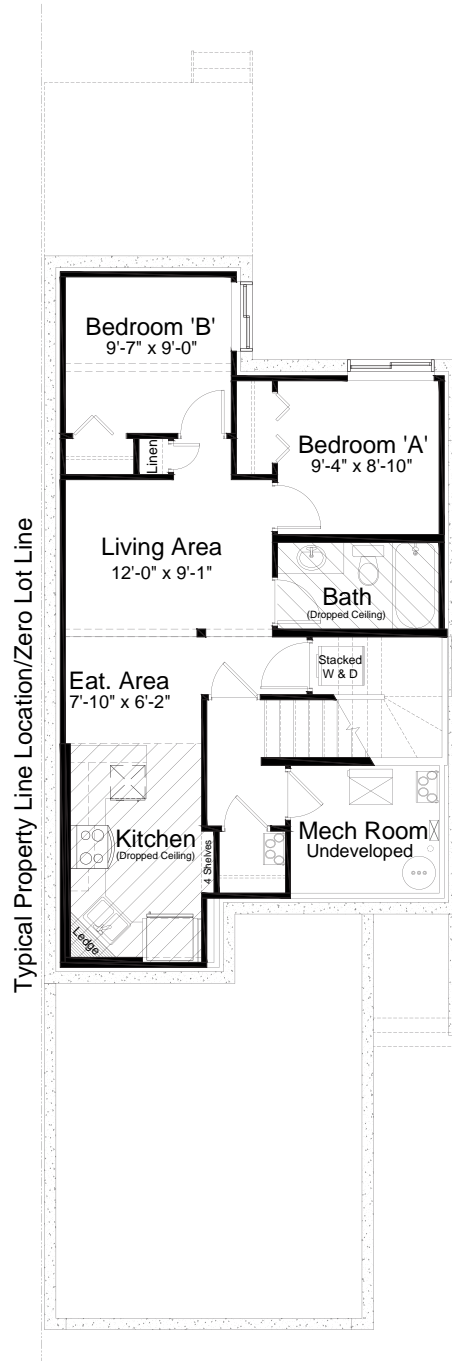
Kitchen/Bath Layout Option



pre-planned options



Revised Entry Option



Basement Suite Option
658 sq. ft. of developed area