

alliston

AT HOME



urban elevation shown

JUNIPER

features

- Open Concept Living Area
- Luxury Vinyl Plank Flooring
- Luxury Vinyl Tile
- Stainless Steel Appliance Package
- Quartz Countertops Throughout
- Upper Floor Laundry
- Upper Floor Loft
- 5-Piece Ensuite
- Main Floor 4th Bedroom
- Main Floor Full Bath
- Attached Double Car Garage
- Triple Pane Windows

2,052 sq. ft.

4 Bed

3 Bath



587-620-3645

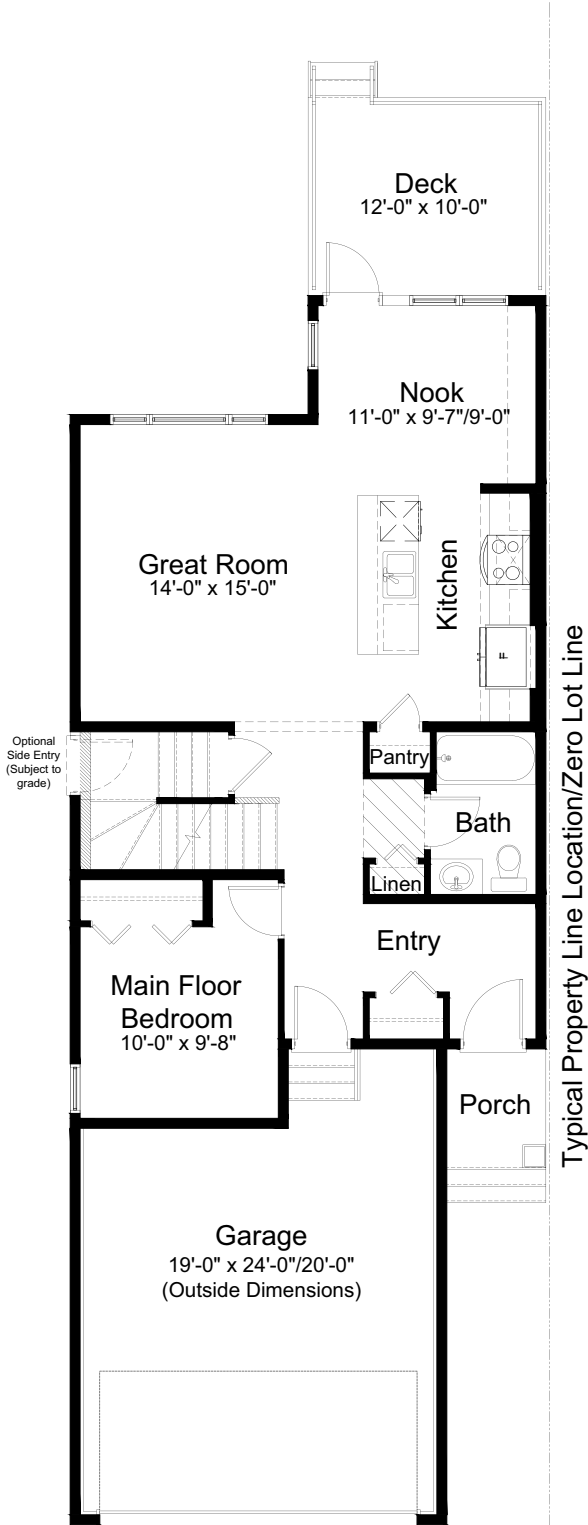
belvedere@allistongroup.ca



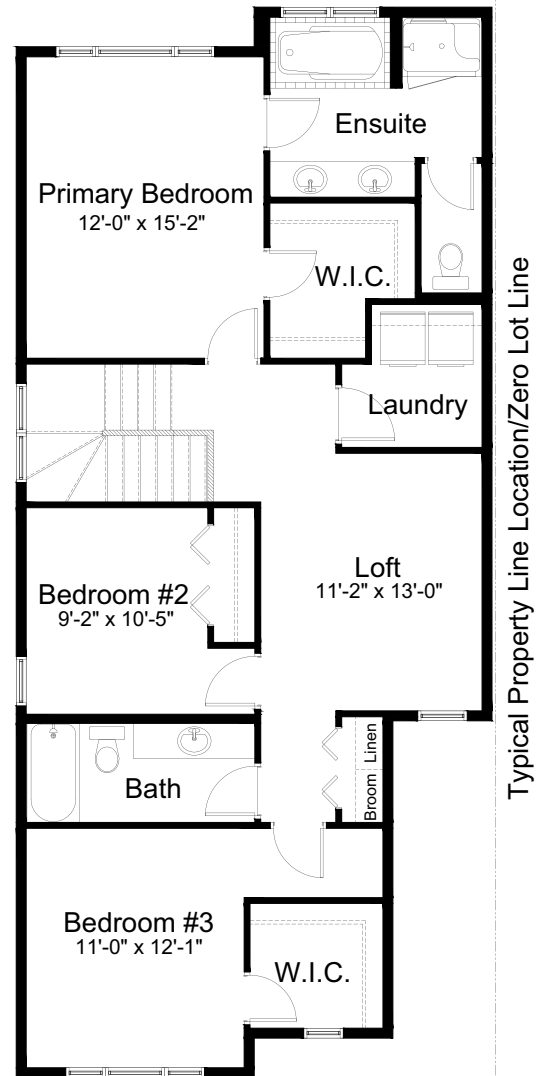
standard plan



CRAFTSMAN #1 ELEVATION



MAIN FLOOR 884 sq. ft.



UPPER FLOOR 1,168 sq. ft.



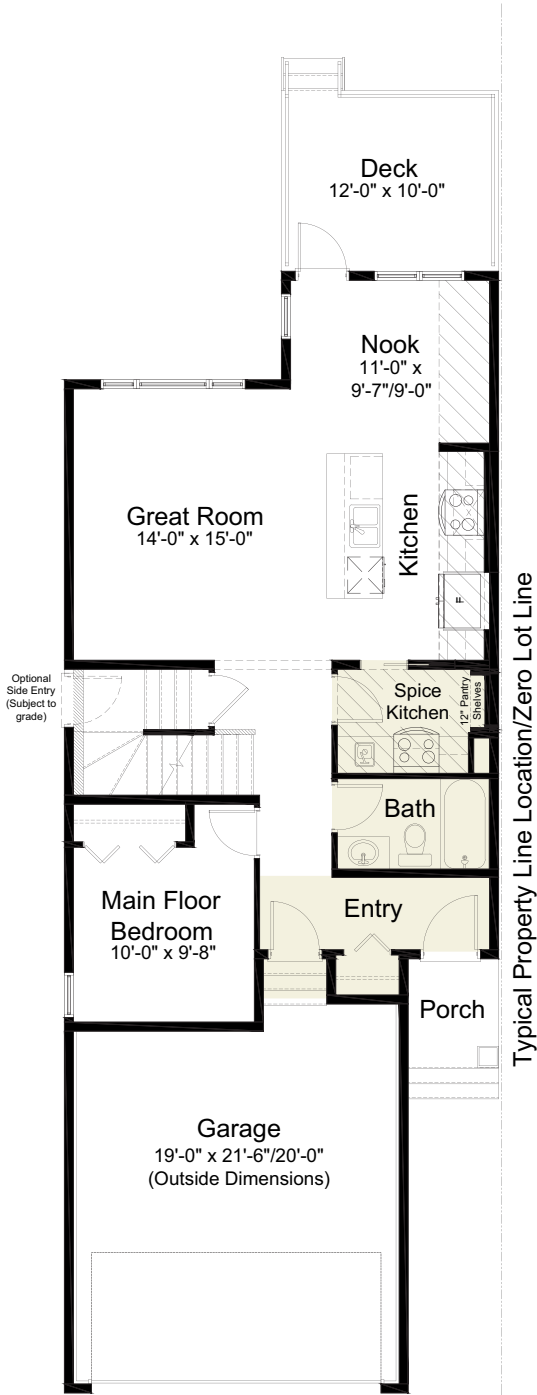
JUNIPER

4 Bed

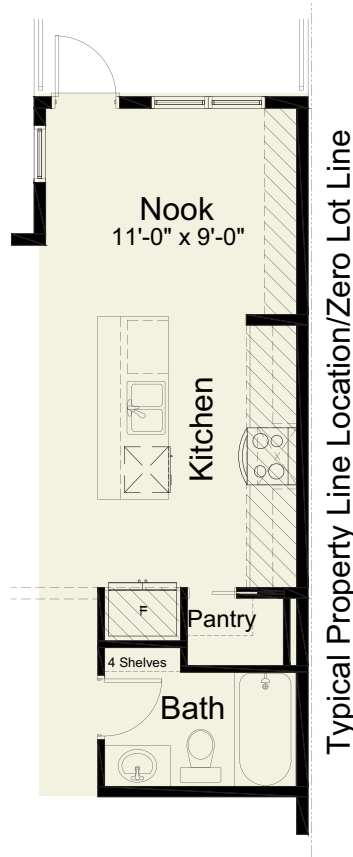
3 Bath

2,052 sq. ft.

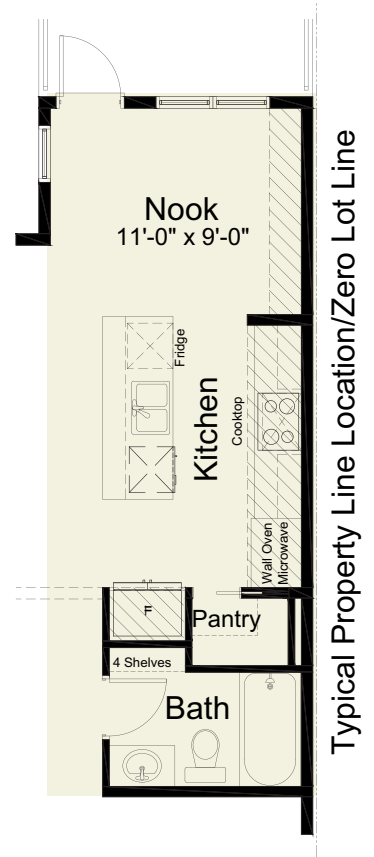
pre-planned options



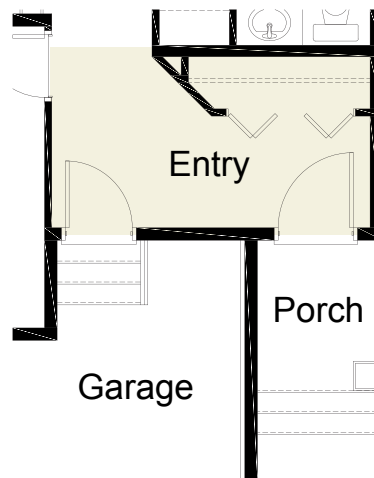
Spice Kitchen Option
main floor 895 sq. ft.



Kitchen/Bath Layout Option



Gourmet Kitchen Option

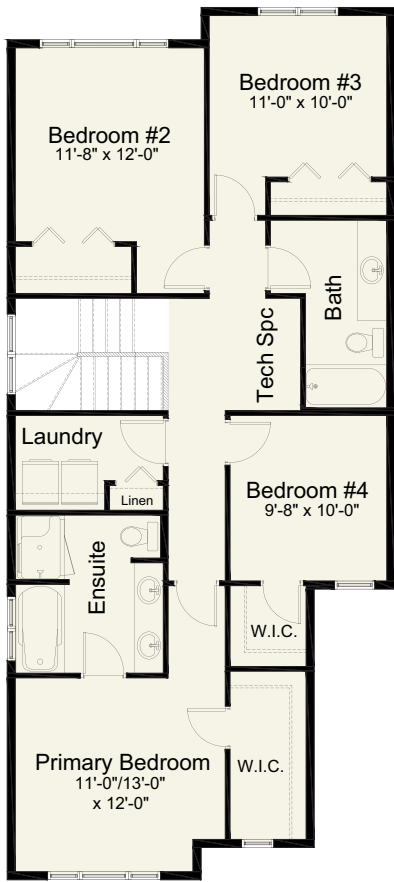


Revised Entry Option

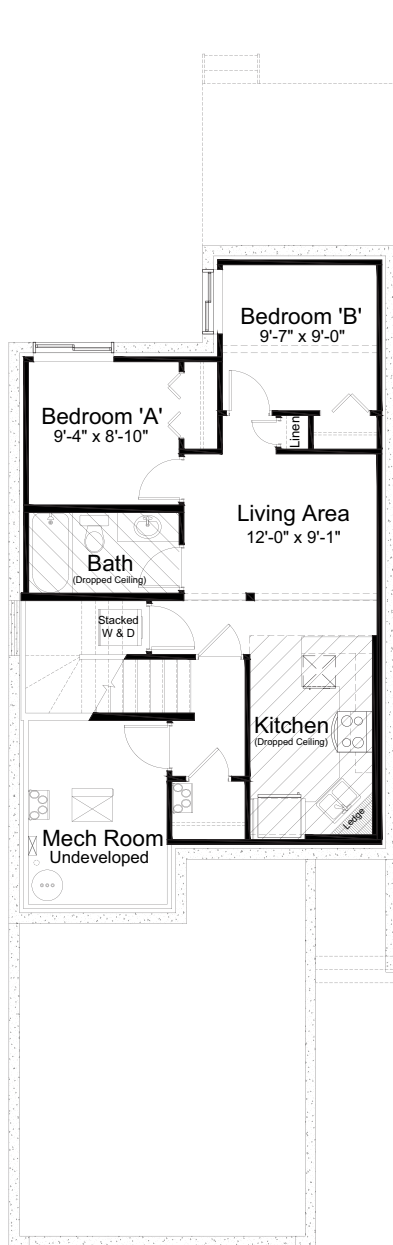
→
more options



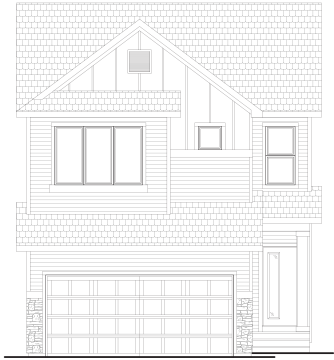
pre-planned options



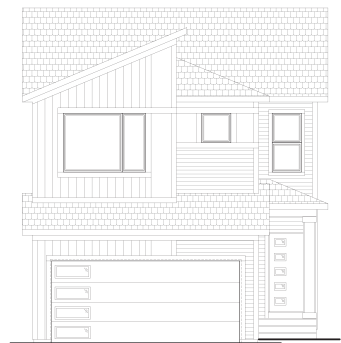
4 Bedroom Option/Layout
upper floor 1,168 sq. ft.



Basement Suite Option
619 sq. ft. of developed area



FARMHOUSE #1 ELEVATION



URBAN #1 ELEVATION



PRAIRIE #1 ELEVATION



CRAFTSMAN #2 ELEVATION