

alliston
AT HOME

QUICK POSSESSION



GRANADA

6 Bed | 4 Bath | 2,372 sq. ft. + 749 sq. ft.

268 Belvedere Drive SE
Calgary, Alberta
Block 3 | Lot 37

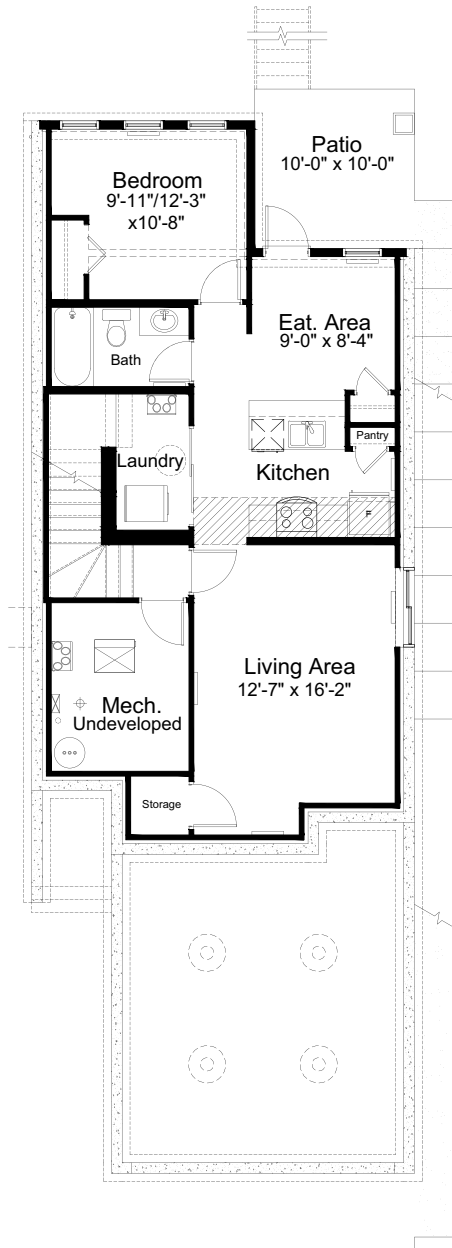
587-620-3645
belvedere@allistongroup.ca

268 belvedere drive se
calgary, alberta

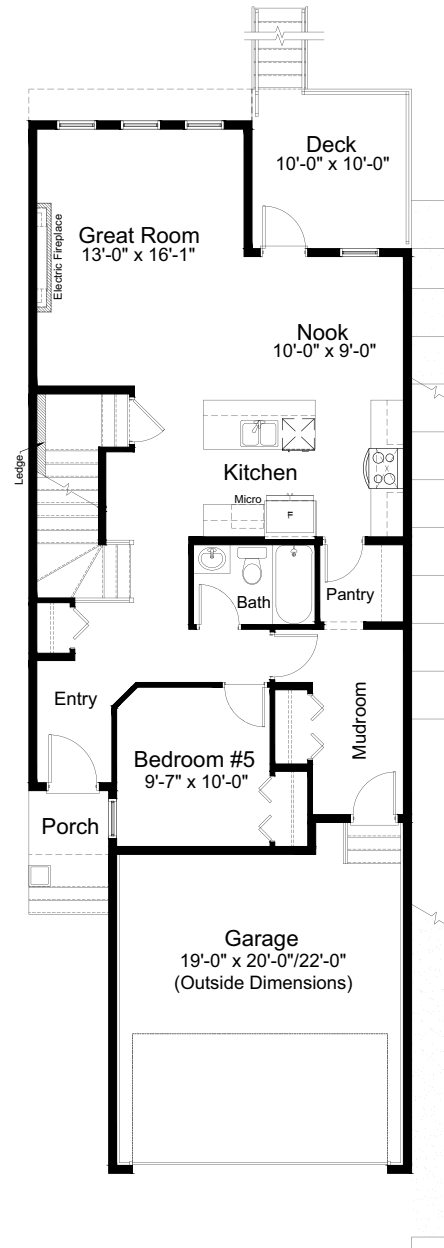


- Open Concept Living
- Stainless Steel Appliance Package
- Whirlpool Washer & Dryer Set
- Quartz Countertops Throughout
- Luxury Vinyl Plank Flooring
- Electric Fireplace in Great Room
- Walk-in Kitchen Pantry
- Main Floor Full Bath
- Main Floor Bedroom
- Spacious 5-piece Ensuite
- Upper Floor Loft
- Upper Floor Laundry
- Rear Deck
- Developed Basement Suite
- Attached Double Car Garage
- Triple Pane Windows

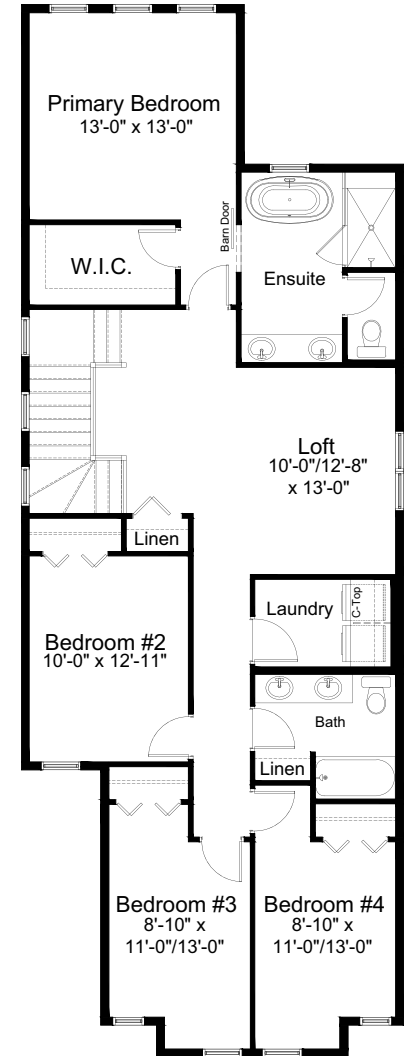
Edited: September 12, 2024
 The builder reserves the right to modify or change plans, specifications, features and prices without notice. Materials may be substituted with equivalent or better at the builder's sole discretion. All dimensions and sizes are approximate and are based on architectural measurements. As reverse, mirrored and/or flipped plans occur throughout the building, please see architectural plans if material to your decision to purchase. Renderings, furnishings and equipment shown are an artist's conception and are intended as a general reference only. Please see disclosure statement for specific offering details. E. & O.E.



BASEMENT SUITE
749 sq. ft.



MAIN FLOOR
992 sq. ft.



UPPER FLOOR
1,380 sq. ft.



FARMHOUSE #2 ELEVATION